

optimum edge

premium edge

mannington edge

wall base



MANNINGTON'S WALL BASE

COLLECTIONS PROVIDE THE

RIGHT CHOICES IN COLOR AND

DELIVER SUPERIOR PERFORMANCE

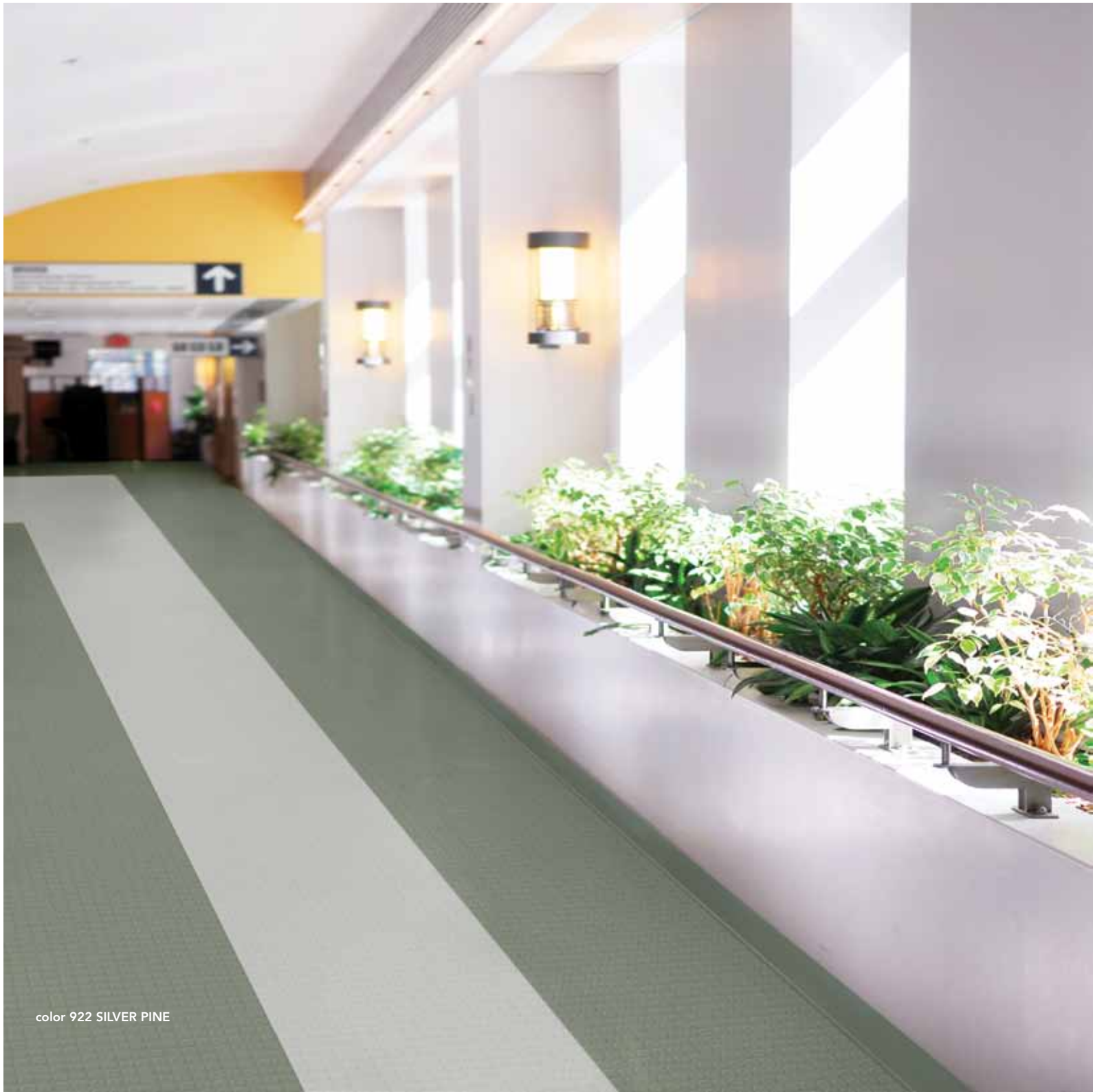


Our premium thermoset rubber wall base is engineered to look great from the day it's installed, for the life of the space.

optimum edge



color 921 TOFFEE



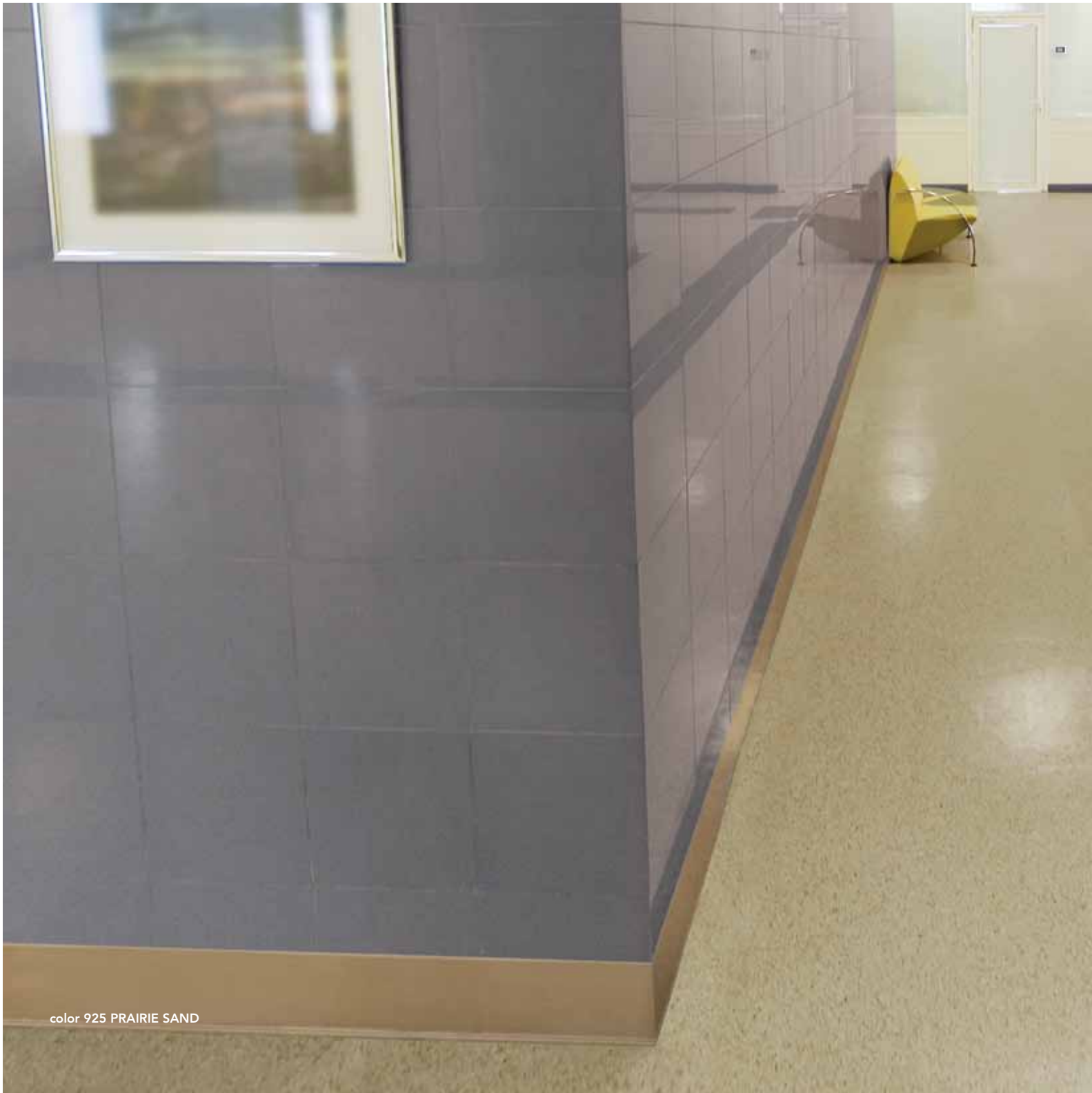
color 922 SILVER PINE

Beautiful colors, with enduring flexibility.

premium edge

Made of durable vinyl especially formulated to excel in high traffic environments.

mannington edge



color 925 PRAIRIE SAND

optimum edge

premium edge

mannington edge

wall base

FEATURES

Mannington's wall base collections provide the right choices in color and deliver superior performance.

Optimum Edge (Type TS), constructed with the highest quality thermoset vulcanized rubber, offers superior dimensional stability. Its molded construction prevents contraction or expansion during or after installation. It is easy to install with a unique top return that ensures a snug wall fit and easily wraps around corners, columns and curved walls. Molded inside and outside corners are available to match various wall base heights. A vinyl alternative product, its smooth satin luster provides superior appearance retention and complements a wide variety of flooring and wall textures.

Premium Edge (Type TP) is made with co-extruded thermoplastic rubber specifically formulated to stand up to scuffs and abrasions yet flexible enough for easy installation around curves and corners. Its smooth matte finish is crack and white-out resistant and will not oxidize or turn brittle. Premium Edge is available in 4' lengths or continuous rolls with pre-formed inside and outside corners to match various wall base heights for smooth transitions.

An economical choice, Mannington Edge (Type TV) thermoplastic vinyl works for high maintenance areas providing a smooth matte finish that is abrasion resistant. Flexible formulation that easily conforms to irregularities of the wall and can be installed around curves and corners. Available in 4' lengths or continuous rolls with pre-formed inside and outside corners to match various wall base heights.

Each of Mannington's wall base collections are available in 2 1/2", 4" and 6" heights with coved or toeless profiles. For color choices, choose from 70 colors including our Sync Color Coordination System integrating our entire rubber products wall base, rubber tile, stair treads and finishing accessories.

Limited 5 Year Commercial Warranty.



- Optimum Edge is a vinyl alternative product
- Optimum Edge is certified under FloorScore – an independent 3rd party IAQ verification system for low emitting flooring Approved as CHPS 01350 compliant and recognized in LEED EQ Credit 4.3
- Adhesives meet VOC content limit of SCAQMD Rule 1168 which may contribute to LEED EQ Credit 4.1.
- Made in the USA