



ORDER

CONSENSUS

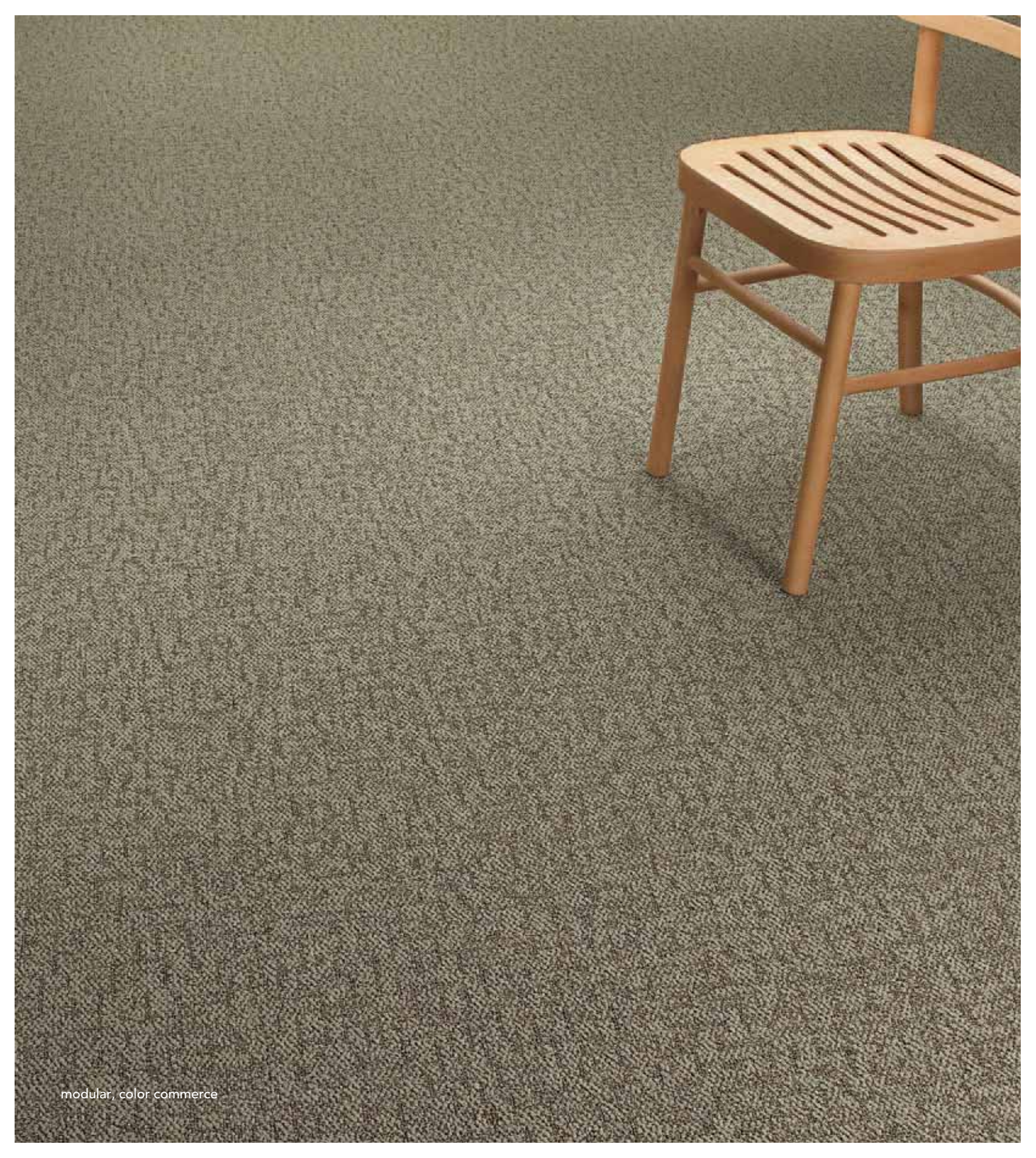
DIRECTION

STYLE

Highlighting the beauty of consensus, Ways II brings a soft geometric pattern that coordinates with many different color schemes.

ways II





There's no need to compromise with Means II, a fluid organic pattern that allows for maximum design flexibility to accent any space.

means II



broadloom, color cabinet



modular, color cabinet

With its bold and dramatic intersecting lines, Trustee conveys a sense of responsibility and commitment with a splash of creativity.


trustee



broadloom, color legislation



modular, color legislation

FEATURES
Available in solution dyed 24" x 24" modular and 12' broadloom.
Antron Lumena® Type 6,6 solution dyed nylon provides unsurpassed stain resistance and cleanability. Antron Lumena® is protected by DuraTech® soil resistant treatment which provides superior soil resistance durable for the useful life of the carpet. The fiber contains permanent static control.
ColorSafe® Bleach Resistant Technology resists color fade-out from bleach spills and splashes. Limited 15-Year ColorSafe® Bleach Resistant Warranty.
XGUARD® Stain Resistant Technology offers the highest level of performance in permanent stain resistance. Protection against common stains and ease of maintenance results in long-term appearance retention and extends the life of the carpet. Limited 15-Year XGUARD® Stain Resistant Warranty.
<p>UltraBac® RE</p> <ul style="list-style-type: none"> • Contains 10% post-consumer recycled content by total product weight • Certified NSF/ANSI-140 Platinum • High tuft bind • Resists edge ravel and delamination • 12' broadloom • Limited 15-Year Wear and Backing Warranty
<p>Integra HP® RE</p> <ul style="list-style-type: none"> • Certified NSF/ANSI-140 Platinum • Contains 10% post-consumer recycled content by total product weight • Impermeable moisture barrier • Eliminates wick-back staining • Superior tuft bind wet/dry • Superior dimensional stability • Passes British Spill and Moisture Impact Tests • 12' performance broadloom • Limited Lifetime Wear and Backing Warranty
<p>Infinity® Modular</p> <ul style="list-style-type: none"> • Contains pre-consumer recycled content • Certified NSF/ANSI-140 Gold with Antron® fiber • Impermeable moisture barrier • Eliminates wick-back staining • Superior tuft bind wet/dry • Superior dimensional stability • Passes British Spill and Moisture Impact Tests • 24" x 24" modular carpet tile • Limited Lifetime Wear and Backing Warranty
 <ul style="list-style-type: none"> • UltraBac® RE and Integra HP® RE contain a minimum of 10% post-consumer recycled content by total product weight and are certified NSF/ANSI-140 Platinum • Infinity® Modular contains pre-consumer recycled content and is certified NSF/ANSI-140 Gold with Antron fiber • Meets CRI Green Label Plus • Adhesive meets VOC content limit of SCAQMD Rule #1168 • ISO 14001 registered manufacturing facility • Contributes to LEED credits • Carpet can be reclaimed through Mannington's LOOP® carpet reclamation program