

## Environmental Features

### Air Quality

- Mannington's Porcelain tiles do not emit or absorb contaminants.
- Mannington Porcelain tile will not absorb VOC's or other chemicals from surrounding materials.
- Mannington Porcelain tile will not support the growth of bacteria, mold or fungus.

### Low Maintenance = Less Contaminants

- Maintenance can be performed with water-based cleaning materials and does not require any solvent based cleaners or sealers.
- Installation adhesives contain no solvents or ozone depleting chemicals.
- Meet VOC content limit of SCAQMD #1168 and may contribute to LEED IEQ Credit 4.1.

### Sample Availability

Architect Folders, 6x6 loose tiles samples available in Calhoun, GA and 12x12 tiles available in Salem, NJ.

### Maintenance

- Post Installation – Complete removal of grout and construction waste.
- Regular/Daily – Dust mop, sweep, vacuum then lightly damp mop with water or General Purpose cleaner.
- Heavy Soils – Spot clean with general purpose or neutral cleaners and a nylon pad or bristle brush. Allow proper dwell time of cleaner, and rinse thoroughly.
- Long Term Maintenance – Contact a professional for various procedures.
- Clean all spills immediately.
- Damaged Tiles – see replacement procedure.

### Warranty

- Mannington warrants that its first choice porcelain tile is manufactured according to ANSI A 137-1988 standards and that tiles are free of manufacturing defects.
- Mannington makes no warranty as to the suitability of its tile for any particular purpose or location and does not warrant that its tile will not scratch, chip or show signs of wear.

### Pricing

Approximate installed cost 12x12: \$6.00 - \$10.00 sft; 18x18 and 12x24: \$8.00 - \$14.00 (assumes \$3.00 - \$6.00 sft installation cost range)

product	Size	Type	P.E.I. Rating	Mohs Rating	Coefficient Of Friction		ADA	Shade Variation	Break Strength	Residential/ Commercial Applications	Tile Thickness
					WET	DRY					
<b>botticelli</b> Country of origin: Italy	12x12	Through Body	N/A Meets ASTM C1243	9	0.69	0.81	YES	V2	>420 lbs	Res/Comm	0.374
<b>carmel</b> Country of origin: Turkey	12x12	Glazed	4	7	0.60	0.71	YES	V3	>502 lbs	Res/Light Comm	0.394
	12x24	Glazed	4	7	0.60	0.71	YES	V3	>502 lbs	Res/Light Comm	0.394
	18x18	Glazed	4	7	0.60	0.71	YES	V3	>502 lbs	Res/Light Comm	0.394
<b>garda</b> Country of origin: Italy	6x6	Glazed	5	7	0.75	0.90	YES	V4	>498 lbs	Res/Comm	0.335
	12x12	Glazed	5	7	0.75	0.90	YES	V4	>498 lbs	Res/Comm	0.335
	18x18	Glazed	5	7	0.75	0.90	YES	V4	>498 lbs	Res/Comm	0.374
<b>monterey</b> Country of origin: Italy	6x6	Color Body	4	5	0.65	1.01	YES	V2	>524 lbs	Res/Light Comm	0.354
	12x12	Color Body	4	5	0.65	1.01	YES	V2	>524 lbs	Res/Light Comm	0.334
	18x18	Color Body	4	5	0.65	1.01	YES	V2	>524 lbs	Res/Light Comm	0.374
<b>perugia</b> Country of origin: Italy	6x6	Color Body	5	7	0.62	0.72	YES	V3	>570 lbs	Res/Comm	0.335
	12x12	Color Body	5	7	0.62	0.72	YES	V3	>570 lbs	Res/Comm	0.335
	18x18	Color Body	5	7	0.62	0.72	YES	V3	>570 lbs	Res/Comm	0.374
<b>serengeti slate</b> Country of origin: Italy	6x6	Through Body	N/A Meets ASTM C1243	6	0.62	0.89	YES	V4	>415 lbs	Res/Comm	0.342
	12x12	Through Body	N/A	6	0.62	0.89	YES	V4	>415 lbs	Res/Comm	0.319
	18x18	Through Body	N/A	6	0.62	0.89	YES	V4	>415 lbs	Res/Comm	0.385
	12x24	Through Body	N/A	6	0.62	0.89	YES	V4	>415 lbs	Res/Comm	0.385
<b>tuscan valley</b> Country of origin: Italy	3x6	Glazed	5	7	0.62	1.04	YES	V3	>275 lbs	Res/Comm	0.343
	6x6	Glazed	5	7	0.62	1.04	YES	V3	>275 lbs	Res/Comm	0.343
	12x12	Glazed	5	7	0.62	1.04	YES	V3	>275 lbs	Res/Comm	0.343
	18x18	Glazed	5	7	0.62	1.04	YES	V3	>275 lbs	Res/Comm	0.382

- All Mannington Porcelain Tile are guaranteed frost resistant according to Standard ANSI 137.1.
- P.E.I. Rating = a rating of wear resistance to foot traffic, according to Standard ANSI 137.1.
- MOHS rating = a rating of scratch resistance of the glaze, according to Standard EN 176.
- Co-efficient of Friction Rating = a rating of slip resistance in wet & dry areas, according to Standard ANSI 137.1.
- ADA rating = The American Disabilities Act recommends a C.O.F. rating of  $\geq .60$ .
- Shade Variation = a rating of the designed shade and texture variation of the tile. "V 2" = moderate shade variation. Rated according to ANSI 137.1 standard, test method ASTM C 609.
- Break Strength = a rating of break strength tested to a standard of  $\geq 250$  lbs.. Standard ANSI 137.1.
- All Mannington Porcelain Tile conforms to standard ANSI 137.1 specs. For Facial Dimension, Stain Resistance, Thickness, Wedging (squareness) and Warpage (flatness).

## Mannington Works.

800 241 2262 [manningtoncommercial.com](http://manningtoncommercial.com)

© Floor designs copyrighted by Mannington Mills, Inc. ©™ Mannington Mills, Inc. 2008 Printed in U.S.A. 10/08 300182

**MANNINGTON**  
COMMERCIAL

## new Work.



featured: serengeti slate, midnight mist

## Express the natural colorations of slate in porcelain tile.

Capture the dramatic shades of slate with the durability of porcelain tile. Through body construction adds tone and depth that resonates in any application.

**MANNINGTON**  
COMMERCIAL

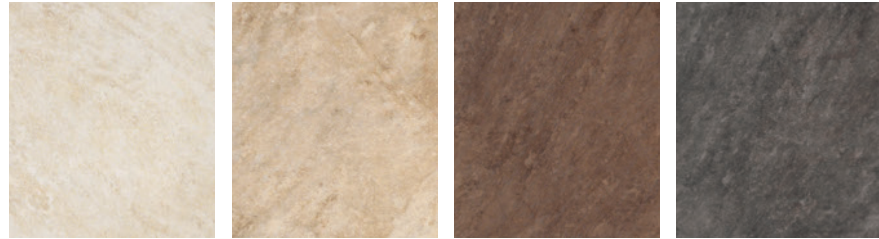
**BOTTICELLI**



BO0T patina green    BO1T bisque    BO2T walnut

- Weatherworn natural stone visual
- Through Body

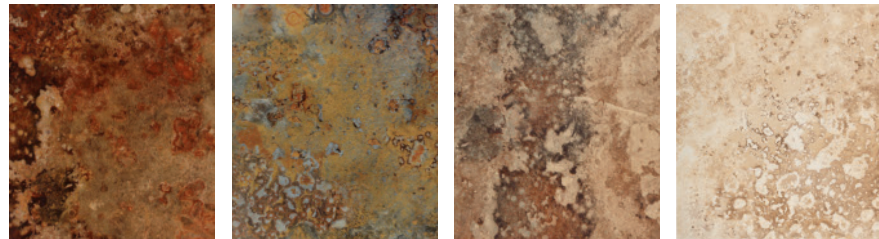
**CARMEL**



CR0T ivory    CR1T porcelain beige    CR2T walnut    CR3T anthracite

- Minimalist marble visual accentuated with rectified edges
- Glazed

**GARDA**



GD0T firestone    GD1T pinecone    GD2T walnut    GD3T beige

- Exotic Indian slate appearance in rich tones with natural color variation
- Glazed

**MONTEREY**



MT0T ivory    MT1T beige    MT2T walnut

- A classic travertine, updated with fresh color and texture
- Color Body

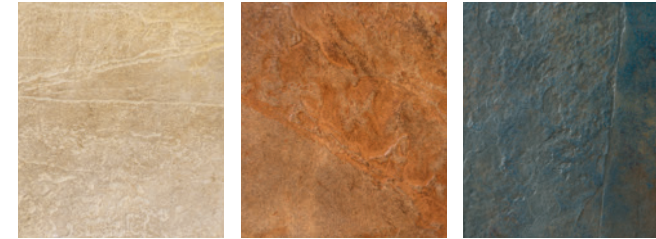
**PERUGIA**



PG0T mineral gray    PG1T gold coast    PG2T sand    PG3T bisque    PG4T sandalwood

- Dramatic cut stone look in natural stone colors
- Varying striations from tile to tile recreate the realism of natural stone
- Color Body

**SERENGETI SLATE**



SS0T ivory tusk    SS1T safari sunset    SS3T midnight mist

- Dramatic texture and color variation of natural slate, with ease of porcelain tile
- Featuring Natural Variation Technology
- Through Body

**TUSCAN VALLEY**



TV0T adobe sunset    TV1T porcelain beige    TV2T oyster white    TV3T sandalwood

- Updated terra cotta design with softened natural characteristics
- Glazed

**FEATURES & BENEFITS**

All Porcelain Construction	Tile incorporating feldspar and kaolin clays and fired at higher temperatures creating greater resistance to chipping, scratching, and staining. 30% harder than most natural stones, marbles and granites. Products meeting ADA guidelines provide series with excellent slip resistance.
Impervious, absorbs <0.5% its body weight in moisture	Hard to stain, frost resistant.
Glazed, Color Body & Through Body	Design choice and flexibility. Our line includes glazed, color body, and through body porcelain tiles, providing the products to meet versatile styling and even the heaviest commercial traffic applications. (Products are all rated Class 4, 5, or through body.)
Consistent Quality	All porcelain tiles are sourced from vendor partners that meet Mannington's rigorous Mannington Certified Vendor requirements; before earning the "Mannington Porcelain" name, all products go through exacting process and finished product controls and audits.
Matching Trim Pieces	All series come with a full complement of matching trim. Our line also includes an extensive collection of accent pieces, including glass/ stone blended mosaics and metal mosaics in our Accent Gallery program.
Designed by Mannington	Mannington's tiles replicate the details of natural stone, slate, marbles, and travertine looks, and include original patterns that meet current North American styling trends. We bring our award-winning approach to styling to the tile category.
Exceptional Durability	Series in commercial collection will stand up to light commercial and commercial traffic, and all are warranted against manufacturing defects (see limited warranty details).
Easy Maintenance	Due to low moisture absorption quality of our porcelain, very easy to maintain. Stain resistant; resistant to spills from penetrating tile. Low life cycle costs. Does not require top-finishes; sealants; etc.