

new Work.



Where conscious thought meets spontaneity

The fresh, intricate designs of Chain of Thought, Continuity and Unedited express visual elegance with fluid circles and off-set geometrics.

MANNINGTON
COMMERCIAL

STREAM OF CONSCIOUSNESS

PERFORMANCE ATTRIBUTES

- Antron® Lumena Type 6,6 Nylon with DuraTech®
- Available in solution dyed modular and broadloom
- 24" x 24" modular carpet tile
- Limited 15-Year XGUARD® Stain Resistance Warranty
- Limited 15-Year ColorSafe® Bleach Warranty
- Limited 15-Year UltraBac® RE Wear and Backing Warranty
- Limited Lifetime Infinity® Modular and Integra HP® RE Wear and Backing Warranty

ENVIRONMENTAL ATTRIBUTES

- UltraBac® RE and Integra HP® RE are certified to NSF/ANSI-140-2007e Platinum Level
- UltraBac® RE and Integra HP® RE contain a minimum of 10% post-consumer recycled content by total product weight
- Infinity® Modular with Antron® fiber is certified to NSF-140 Gold
- Antron® Lumena fiber is EPP certified by SCS
- Adhesive meets VOC content limit of SCAQMD Rule 1168
- CRI Green Label Plus
- ISO 14001 registered manufacturing facility
- Contributes to LEED Credits
- Carpet can be reclaimed through Mannington's LOOP™ Carpet Reclamation Program

ULTRABAC® RE

- Certified to NSF/ANSI-140-2007e Platinum Level
- Contains 10% post-consumer recycled content by total product weight
- High tuftbind
- Resists edge ravel and delamination
- Limited 15-Year Wear and Backing Warranty

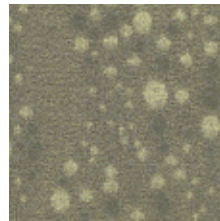
INFINITY® MODULAR

- Contains pre-consumer recycled content
- Infinity® Modular with Antron® fiber is certified to NSF-140 Gold
- Impermeable moisture barrier
- Eliminates wick-back staining
- Superior tuftbind wet/dry
- Superior dimensional stability
- Passes British Spill and Moisture Impact Tests
- 24" x 24" modular carpet tile
- Limited Lifetime Wear and Backing Warranty

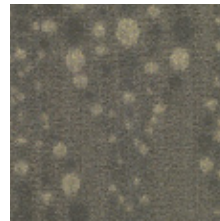
INTEGRA HP® RE (custom option only)

- Certified to NSF/ANSI-140-2007e Platinum Level
- Contains 10% post-consumer recycled content by total product weight
- Impermeable moisture barrier
- Eliminates wick-back staining
- Superior tuftbind wet and dry
- Superior dimensional stability
- Passes British spill test
- Flexible in cold/hot environments
- Available in 9' and 12' broadloom
- Limited Lifetime Wear and Backing Warranty

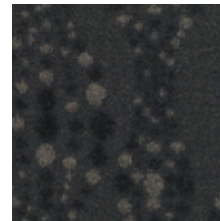
CHAIN OF THOUGHT



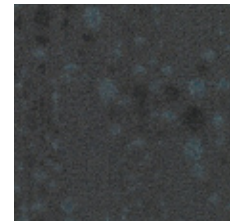
dewkist 1212



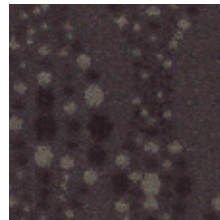
sea mist 1313



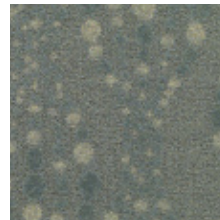
hawaiian sand 1503



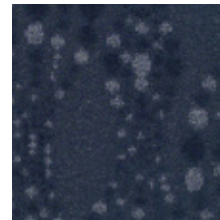
dark waters 1516



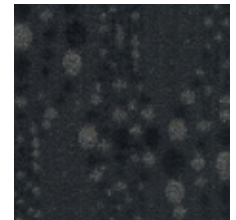
agate 2515



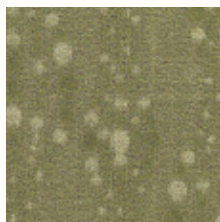
pacific 3210



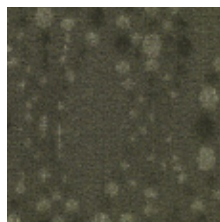
riviera 3509



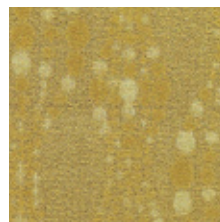
majolica 3511



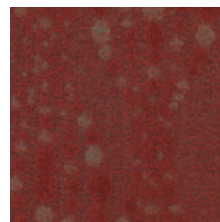
jungle 4307



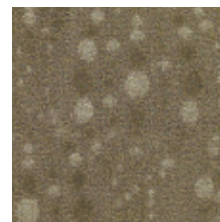
mountain top 4508



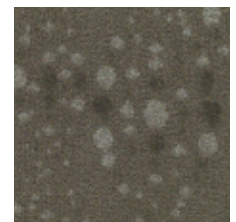
radiance 5301



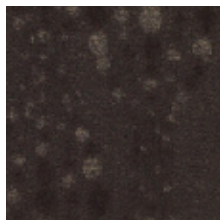
sun god 7314



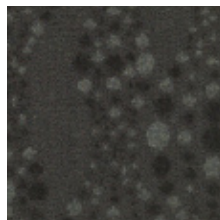
sandrift 8205



seacliff 8304



java 8502



argali 8506

Mannington Works.

800 241 2262 manningtoncommercial.com

Printed on recycled paper. Please help us close the loop by recycling this brochure or by sharing it with another individual.
MCSOC

MANNINGTON
COMMERCIAL