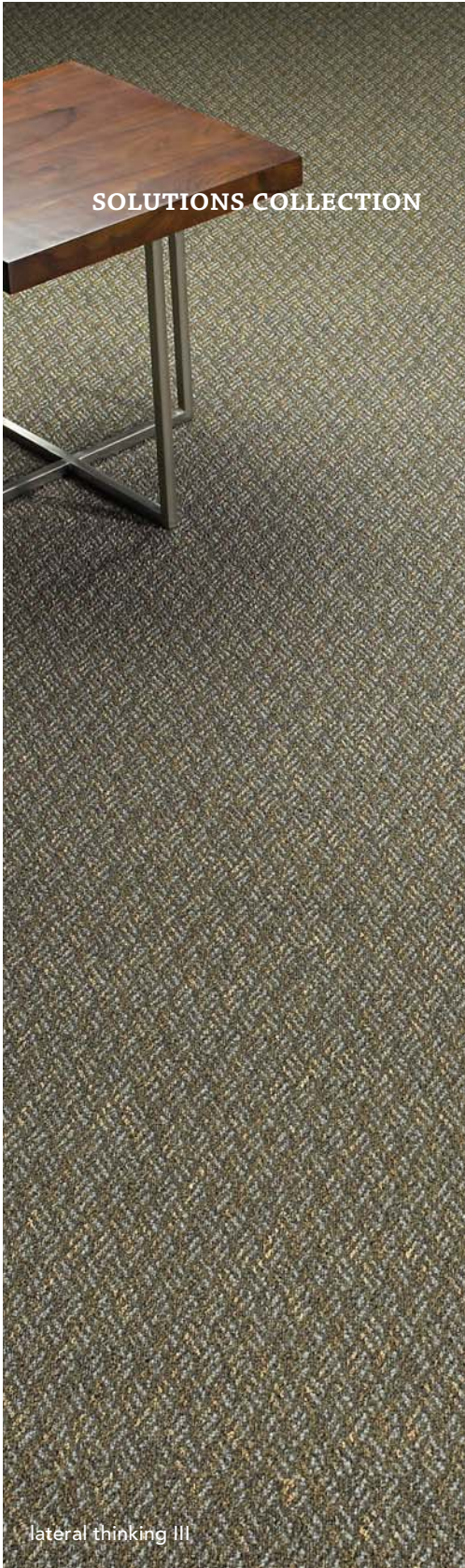


new Work.



For spaces that inspire the imagination, Solutions has you covered.  
Cutting-edge designs unite to create stylish and modern environments.

MANNINGTON  
COMMERCIAL

LATERAL THINKING III / MOTIVATION III / INTUITION III

PERFORMANCE ATTRIBUTES

- Available in solution/yarn dyed broadloom and modular
- Featuring INVISTA™ Antron® Legacy Type 6,6 nylon with DuraTech®
- Limited 15-Year ColorSafe® Stain Resistance Warranty
- Limited 15-Year XGUARD® Stain Resistance Warranty
- Limited 15-Year UltraBac® RE Wear and Backing Warranty
- Limited 15-Year Integra HP™ RE Wear and Backing Warranty
- Limited Lifetime Infinity® Modular Wear and Backing Warranty

ENVIRONMENTAL ATTRIBUTES

- UltraBac® RE is certified to NSF/ANSI-140-2007e Platinum Level
- Integra HP™ RE contains a minimum of 10% post-consumer recycled content by total product weight
- EPP Gold – 3rd party certified by SCS
- Adhesive meets VOC content limit of SCAQMD Rule 1168
- UltraBac® RE contains 10% post-consumer recycled content by total product weight
- Contains various levels of recycled content (style dependent)
- INVISTA™ Antron® Legacy fiber is EPP certified by SCS
- CRI Green Label Plus
- ISO 14001 registered manufacturing facility
- Contributes to LEED credits
- Carpet can be reclaimed through Mannington's LOOP™ Carpet Reclamation Program

ULTRABAC® RE

- UltraBac® RE is certified to NSF/ANSI-140-2007e Platinum Level
- Minimum 10% post-consumer recycled content by total product weight
- Excellent dimensional stability
- High tuft bind
- Resists edge ravel and delamination
- 12' broadloom
- Limited 15-year Wear and Backing Warranty

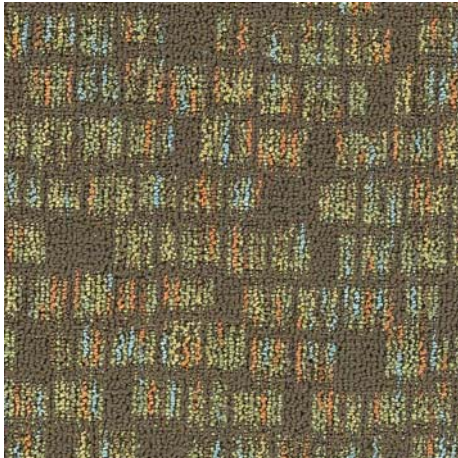
INTEGRA HP™ RE

- Contains 10% post-consumer recycled content by total product weight
- Impermeable moisture barrier
- Eliminates wick-back staining
- Superior tuftbind wet/dry
- Superior dimensional stability
- Passes British Spill and Moisture Impact Tests
- Flexible in cold/hot environments
- 9' and 12' broadloom
- Limited Lifetime Wear and Backing Warranty

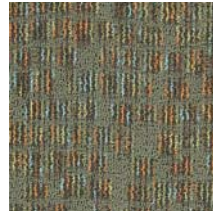
INFINITY® MODULAR

- Impermeable moisture barrier
- Eliminates wick-back staining
- Superior tuftbind wet and dry
- Superior dimensional stability
- Passes British spill test
- 24" x 24" modular carpet tile
- Limited Lifetime Wear and Backing Warranty

MOTIVATION III FEATURED all colors available in all three patterns



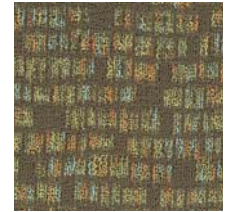
hydrogen



nitrogen



aluminum



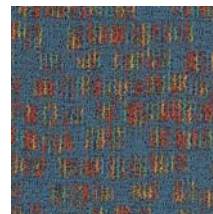
proton



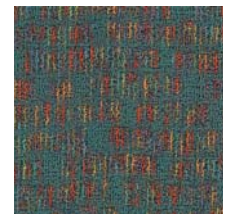
neutron



carbon



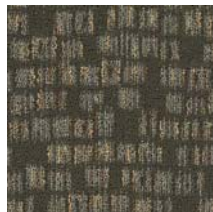
ion



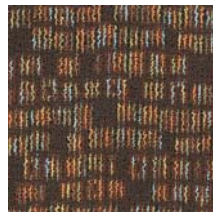
electron



helix



atom



oxygen



helium

Mannington Works.

800 241 2262 manningtoncommercial.com

Printed on recycled paper. Please help us close the loop by recycling this brochure or by sharing it with another individual.

MCS03

MANNINGTON  
COMMERCIAL