

new Work.

ALL STAR COLLECTION

gametime III
and
halftime



A Winning Combination

Like a well designed play, the All Star Collection combines graphic simplicity and subtle textural dimensions that create drama for any setting.

MANNINGTON
COMMERCIAL

specifications

GAMETIME III / HALFTIME

INVISTA™ XTI® Type 6,6 Nylon
 Limited 15 Year ColorSafe® Bleach Resistance Warranty
 Limited 15 Year XGUARD™ Stain Resistance Warranty
 CRI Green Label Plus certified

UltraBac® RE

- Contains 10% post-consumer recycled content by total product weight
- Excellent dimensional stability
- High tuft bind
- Resists edge ravel and delamination
- Available in 12' broadloom
- Limited 15-Year Wear and Backing Warranty

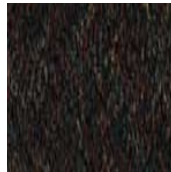
Integra HP™

- Impairmeable moisture barrier
- Eliminates wick-back staining
- Superior tuftbind wet and dry
- Superior dimensional stability
- Passes British spill test
- Flexible in cold/hot environments
- Available in 9' and 12' broadloom
- Limited Lifetime Wear and Backing Warranty

Infinity® Modular

- Impairmeable moisture barrier
- Eliminates wick-back staining
- Superior tuftbind wet and dry
- Superior dimensional stability
- Passes British spill test
- Available in 24" X 24" carpet tile
- Monolithic installation
- Limited Lifetime Wear and Backing Warranty

GAMETIME III



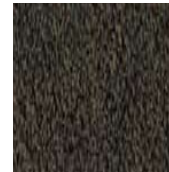
cobb



dean



dimaggio



gehrig



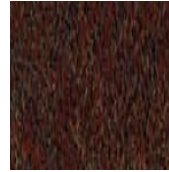
mantle



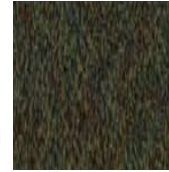
mays



murray



perez



puckett



ripken



robinson



ruth



sandburg



sosa



sutter



winfield

HALFTIME pattern repeat 24"W x 27"L



cobb



dean



dimaggio



gehrig



mantle



mays



murray



perez



puckett



ripken



robinson



ruth



sandburg



sosa



sutter



winfield